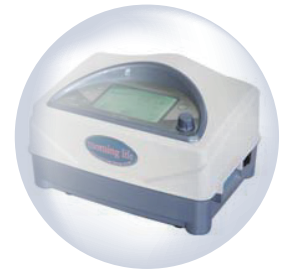


Compressible Limb Therapy System

Manual Guide



WIC-2008S



WIC-2008

 **WON INDUSTRY CO.,LTD.**

※ **Indication for use :**

WIC-2008S, WIC-2008 is intended for use by medical professionals and patients at home, who are under medical supervision, in treating many conditions, such as : Primary lymphedema, Edema following trauma and sport injuries, Post immobilization edema, Venous insufficiencies, Lymphedema.

»» Cautions

- Federal law restrict this device to sale by or on the order of a physician.
- Before using our device, please precisely read the manual.
- Keep this manual near to the device for easily reading it.
- This manual presents the details to be kept by users for preventing any danger or property-loss and for safe using the device.

Warning

In case of not following the instructions, the user may suffer from injury or death.

Cautions

In case of not following the instructions, the user may suffer from injury or property damage.

Indications



This is a restriction indication.



This is an indication for following properly.



This is an indication for not disassembling.



This is an indication for unplugging the power cord from the wall outlet.

Warning

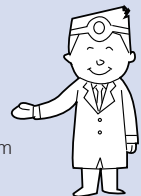
Do not use the products for those of the following.

- The person who suffer from acute inflammation or external wound of bleeding risk due to the purulent inflammation



Contraindications

- Acute pulmonary edema
- Acute thrombophlebitis
- Acute congestive cardiac failure
- Acute infections
- Deep vein thrombosis
- Episodes of pulmonary embolism
- Wounds, lesions, or tumors at or in the vicinity of application where increased venous and lymphatic return is undesirable



»»» Cautions

⚠ Warning

When you feel bad or pains while using, don't use the product.

- Stop using it immediately.



For the first time, use the product within 20 minutes.

- Start using for about 5 minutes for the first time, and increase time constantly suitable to your own body strength. (The continuous use for a long time may lead the adverse effect.)



Using for about 10~20 minutes is suitable



It's restricted for the children's use.

- It may cause electric shock and other injuries.

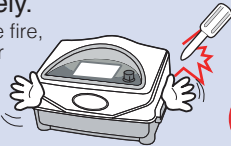


Be careful the water or other substance cannot be inserted inside of the product.



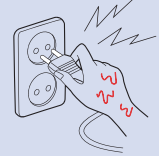
When a disorder occurs or the product is not operated, do not modify, disassemble or repair it indiscriminately.

- It may cause the fire, electric shock or other injuries.



When plugging or unplugging the power cord from the wall outlet, please remove moisture from hands.

- It may cause the electric shock, electric leakage or fire.



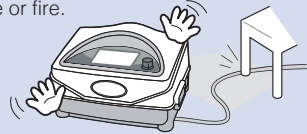
Do not use other current except for 220V single-phase current. After using the product, please unplug the cord properly.

- It may cause the fire, electric shock or other injuries.



Do not put a heavy object on the power cord or restrain it with table and chair.

- It may cause the electric shock, electric leakage or fire.

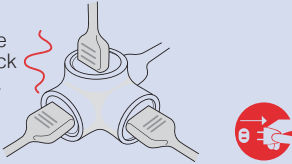


»» Cautions

⚠ Warning

Please use the exclusive power outlet and do not plug several cords at once.

- It may cause the fire, electric shock or other injuries.



Do not give a strong shock to the product and drop it.

- It may cause the product damage.



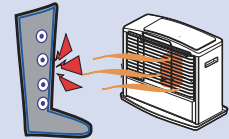
Be careful not put clip, staplers, needle, metal or food into the device.

- Short, heating generation possible.



Don't keep the pad near to heating materials such as stove, cigarettes etc.

- Leaking of air or fire possible.



⚠ Cautions

Do not walk around while wearing boots, waist band and thigh band, when using the product.



Keep the product out of the direct rays of the sun or heating equipments including gas stove.

- It may cause the product modification or discoloration.

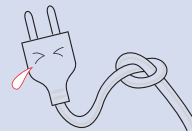


Do not use the product except for massaging.

- It may cause the product damage.



Be careful that the air hose cannot be bent or twisted.

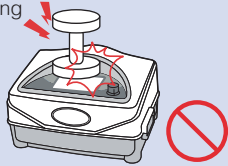


»»» Cautions

⚠ Warning

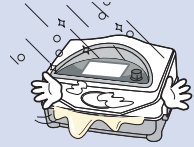
Do not place any objects on the product.

- When blocking the induction part, placing other objects on the connecting hose, or bending the connecting, it may cause the disorder of pressure adjustment. (It may cause the damage or disorder.)



When not using the product for a long time or using it in the cold place.

- It may not operate; therefore, use it after repetitively operating the program from low and medium to high for about 3~4 times.



When cleaning the sleeve, don't use water, oil, benzene, alcohol, gasoline, chemicals etc.

- (If not so, the life of the garment will be very shorten)
Use little wet tower.



Don't use sleeve to naked body.

- In wearing thin underwear, use the garment.

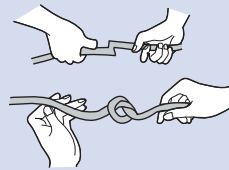


When cleaning the device, don't use water, oil, benzene, alcohol, gasoline, chemicals etc.

- (If not so, the life of the garment will be very shorten)
Use dry tower.



Don't fold or bend the hose.



Please dispose the product according to the waste procedure.

- It may cause the environmental pollution



»»» Feater / Instruction

■ Feature

1. 4Chambers

Soft massage delivered from 4 chambers.

2. Consistency

Pressure control valve can supply steady pressure, patient is no risky.

3. Easy connection

Direct connect hose to cuff, easy to use.

4. One touch connect

Adopt one touch plug system, eliminate hose out during use.

5. Safety system

When electricity out, just hose out to cuff.

■ Instruction

- Using leg cuff

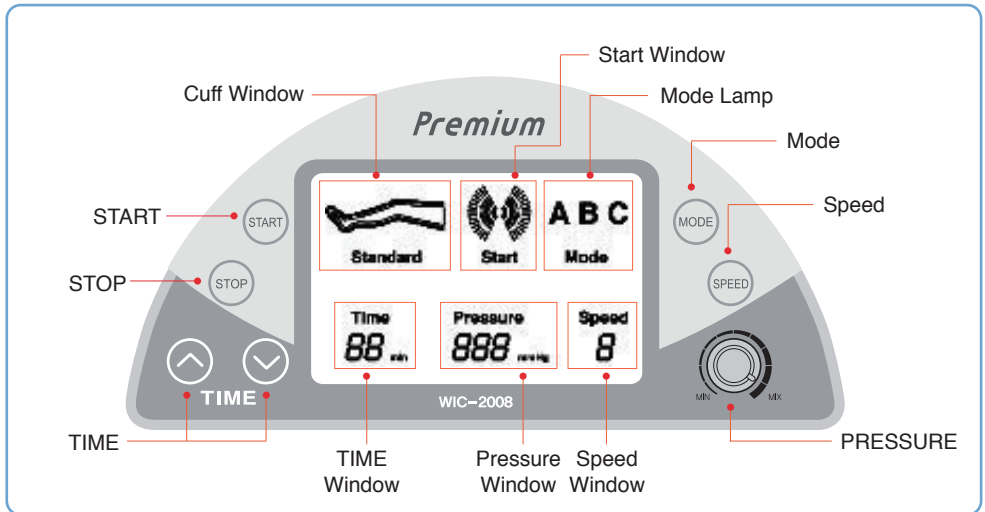
To avoid pain of knee, do not fold cuff during operation.

»» Name of parts [WIC-2008]

Product Specifications

Model	WIC-2008	Location	Indoor
Rated Voltage	AC220~230V 50/60Hz	Timer	0~60 minutes
Rating Fuse	AC250V 1A 20mm	Pressure	0~230mmHg(±10%)
Consumption	60VA	Dimension	280X215X172mm

Name of Parts



Accessories

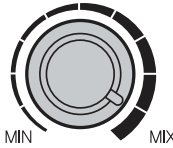


»» Instruction for use [WIC-2008]

1. **START** : Start Button.
2. **STOP** : Stop Button. Push stop button twice, instrument returns initial set.
3. **TIME** : Timer range is 0-60min. Initial time set is 10min.
4. **SPEED** : Speed Control range : 1-5 level. Initial set is 3 level.
5. **PRESSURE** : Pressure range : 0~230mmhg \pm 10% Optimal pressure is mid range.

For low pressure

Turn the knob
anti clockwisw is
lower pressure

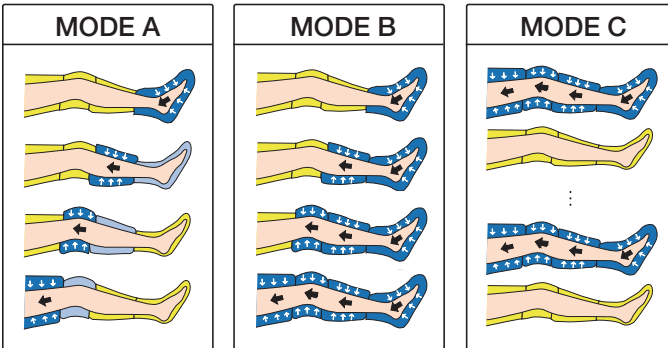


For high pressure

Turn the knob
clockwisw is
higher pressure

6. LCD Window

- A. Cuff Window : Indicate pressure.
- B. Start Window : Indicate start and lighting.
- C. 3 kind of mode, ABC mode changes in order presedecce.
- D. Timer Window : Indicate pressure.
- E. Pressure Window : Indicate pressuer.
- F. Speed Window : Indicate pressuer speed
Speed 1 : 4sec, Speed 2 : 8sec, Speed 3 : 12sec, Speed 4 : 16sec,
Speed 5 : 20sec

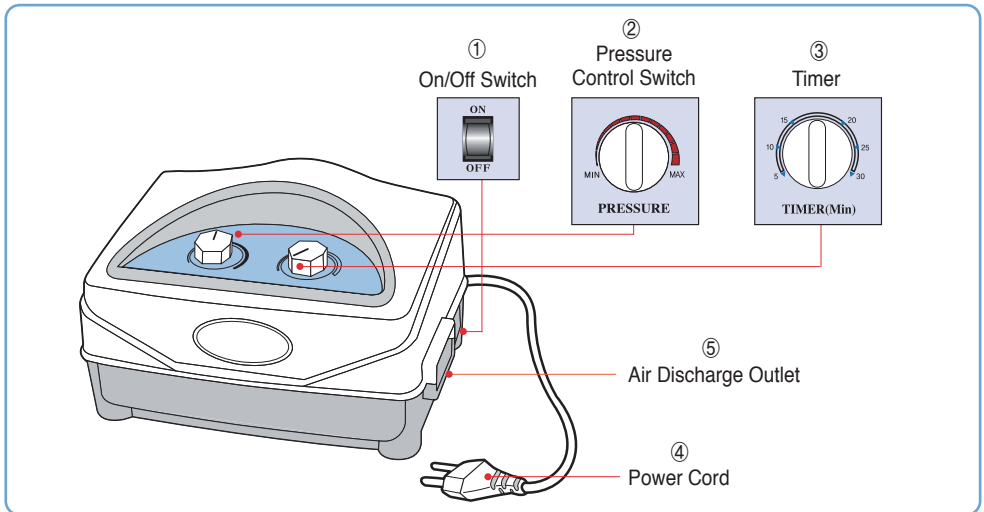


»» Name of parts [WIC-2008S]

Product Specifications

Model	WIC-2008S	Location	Indoor
Rated Voltage	AC220~230V 50/60Hz	Timer	0~30 minutes
Consumption	60VA	Pressure	0~230(±10%)

Name of Parts



Accessories



»»» Instruction for use [WIC-2008S]

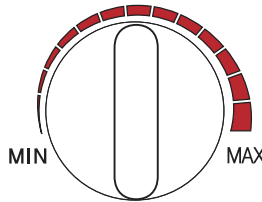
■ To set pressure

Pressure range : 0~230mmhg \pm 10%

Optimal pressure is mid range.

For low pressure

Turn the knob anti clockwisw is lower pressure



For high pressure

Turn the knob clockwisw is higher pressure

PRESSURE

- 2 times warming up stage, air pressure begins at set pressure
- 4sec time pressure at chamber and move next chamber.
- Please check the air out when feeling pressure is low.

※ Setting pressure

Do not begin with high pressure and start pressure low and move to high

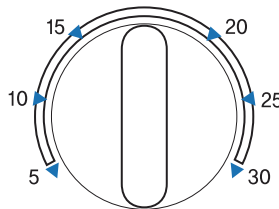
■ To set Timer

Time range : 0~30min

Optimal time is 10min

For low pressure

Turn the knob anti clockwisw is lower pressure



For high pressure

Turn the knob clockwisw is higher pressure

TIMER(Min)

»» Instruction for use(Leg cuff)

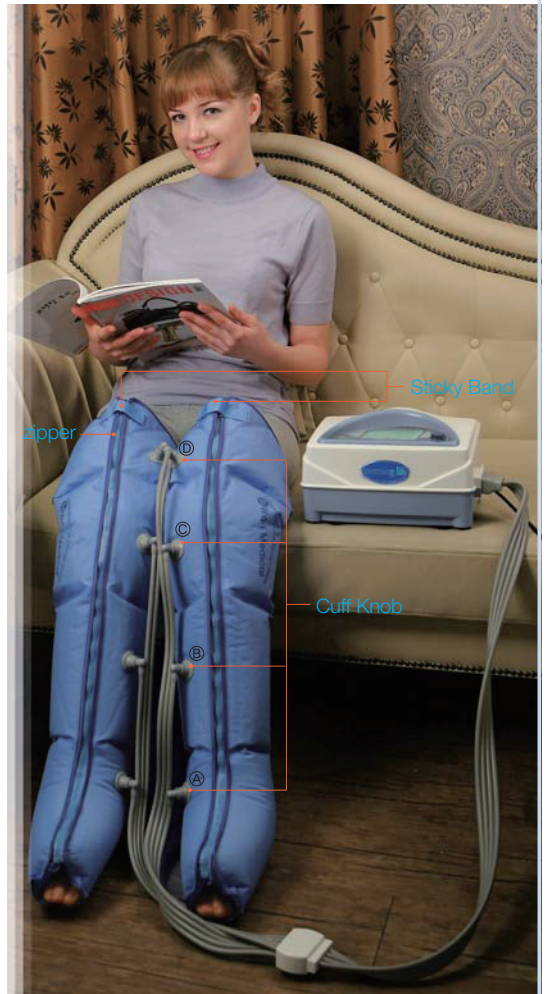
Leg cuff

1. Plug in power cord of instrument and switch on.

2. Wear the boots

- Wear the boots and zipper up to end check locker
- Knob of boots should keep face each other
- Push jack to boot's knob
Connect hose connector into air outlet of instrument.

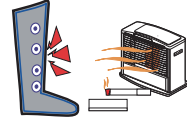
※ Operation order should repeat from A to D in sequential.



»» Keeping Methods

All the pads are not to be repaired as consumption goods. Be always careful.

- 1** Do not place the sleeve near the sharp things such as furnaces, needles, scissors, etc.



- 2** Keep it in the dry place where there is no water or humidity.



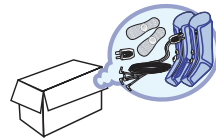
- 3** Do not wash the sleeve, and wipe it with towel tenderly.



- 4** Do not keep the device at too low temperature in winter time. (It may be hardened and damaged.)



- 5** If you wish to keep the device for a long time, place it in its box.



* Environments For Its Operation and Custody

1. Operate and keep the device in clean place at normal temperature (Temperature; 10~40℃, Humidity; 30~85%).
2. Do not use it outdoors.

»» Management

Contents	Check-ups
When it doesn't work	<ul style="list-style-type: none"> * Check up if you have plugged it in. * Turn on the power switch. * Check up if there is any problem in the power cord (whether if 110V or 220V). * Check up if you have set the timer
When there is a strange sound like air leakage	<ul style="list-style-type: none"> * Check up if there is any damage in the connecting hose and connector. * Check up if you have connected the connector with the device. * Check up if the connecting hose is pressed or bent.
When the air does not go into the boots and waist bands or when there is no pressure	<ul style="list-style-type: none"> * Check up you have connected the connector with the device. * Check up if any heavy stuffs are placed on the connecting hose or if it is bent * Check up if the connecting hose is properly connected with the pad groove with a rhythmic sound.
When the wind continues to go into the boots and when the wind leakage sound is made	<ul style="list-style-type: none"> * Check up where the wind leakage is there in the boots. If there is no wind leakage, turn off the power, and then, turn on the power again and check up if it does work properly. <p style="color: red;">(boots and each pad are consumption goods.)</p>

»» Warranty Certificate

- In case of following articles, the product is not repaired at no charge
 1. Disorder due to the strong shock
 2. When the user modifies or repairs the inside of product discretionally
 3. When using the product in the restricted area
 4. Disorder due to the improper operation other than written in the manial guide
- The boots and other pads accessories are to be purchased.

Product Warranty Certificate

Name of Product	Compressible Limb Therapy System (Air Pressure Therapy Device)		
Model	WIC-2008S, WIC-2008		
Product Number	Main Body and Box Package		
Warranty Period	Main body : 1 Year, Cuff : 3Months(Distributor)		
Date of Purchase	Year	Month	Day



**WON
INDUSTRY CO.,LTD.**

Manufacturer : WON INDUSTRY CO.,LTD.
7-12,7-6,Bangadari-gill
Siheung-si, Gyeonggi-Do.KOREA
TEL: 031-404-3093



CE ISO14001
ISO 9001 / EN 13485
PATENT NUMBER 10-0823425

Morning Life

System helps you to maintain healthy body by promoting the blood circulation.



WON
INDUSTRY CO.,LTD.

7-12,7-6,Bangadari-gill
Siheung-si, Gyeonggi-Do.KOREA
TEL: 031-404-3093
www.lead-care.com
E-mail : Wonindustry@naver.com